

RECOVERY AND RESILIENCY PARTNERSHIP PROJECTS

CITY OF CHATTAHOOCHEE CONNECTIVITY

Please visit
www.R2P2.skeo.com
to comment on
these preliminary
concepts!

Issues, Background and Opportunities

Safety improvements are needed for pedestrians and bicyclists to move across town. Additionally, a multi-use route for pedestrians, bicyclists and golf carts between the River Landing Park/RV park to downtown can link recreation visitors to services and amenities.

Several proposed regional trails extend into Chattahoochee. Designating in-town bike lanes to improve safety and wayfinding for regional visitors connecting by way of the Highway 90 Corridor/Old Spanish Trail or the Chattahoochee to Bristol Trail can support recreation-focused economic development in the area.

Design Concepts

1 - Citywide Connectivity (right)

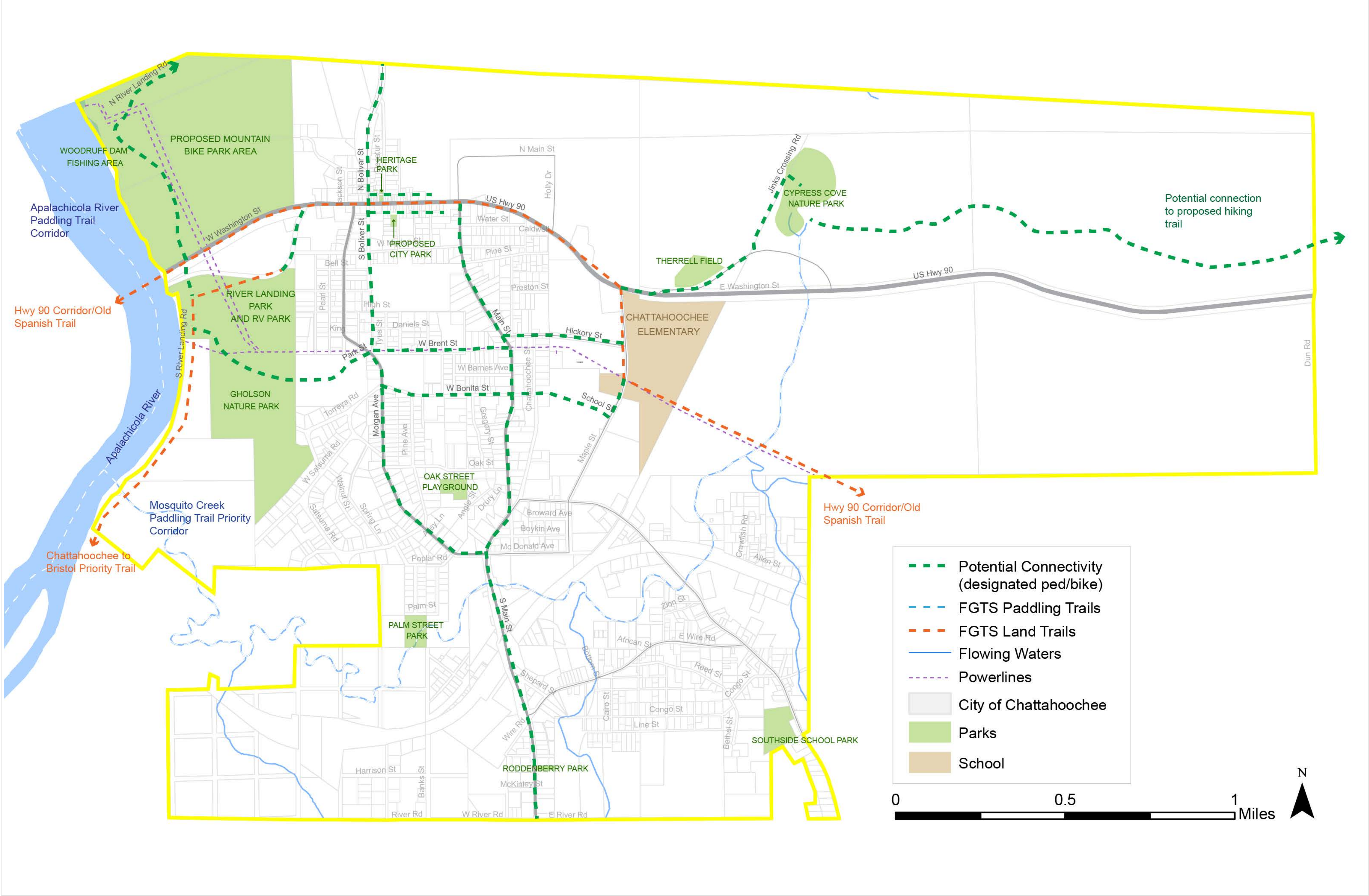
Connecting Chattahoochee's downtown, natural assets and regional recreation opportunities by implementing safe pedestrian and bicycle paths can support economic development, quality of life and property value.

2 - Regional Connections and Assets (below)

Regional mapping is underway to identify recreation assets and connections between Chattahoochee and five other cities in the Florida Panhandle area. This work will help identify recreation opportunities that can support economic and ecological resilience.

1 - Citywide Connectivity Plan

Suggested citywide bicycle and pedestrian network showing recommended bike and pedestrian routes across the city as well as connections to Florida's proposed greenway and trail networks.



River Landing Park Connector



A dedicated, wide multi-use path is planned to connect from River Landing Park to the green alley to improve safe connections for RV park visitors, bicyclists and pedestrians.



Bike and Pedestrian Connectivity Types

Different types of safe bike and pedestrian connections can be implemented based on street conditions, available right of way, vehicular traffic volume and speed, and other considerations.

1. Shared Multi-modal Paths (Greenways)

These wide paved paths accommodate pedestrians, bicyclists and other non-vehicular users. Some adjacent roads include marked bike lanes on the roadway in addition to the shared path for fast-paced bicyclists.



This shared path includes pavement markings to separate pedestrians and bicyclists.

2. Sidewalks and Bike Lanes

Sidewalks and on-street bike lanes can safely accommodate pedestrians and bicyclists when right of way is limited, and/or to retrofit existing roadways for safe pedestrian and bicycle connectivity.



Shared bike lanes are designated by pavement markings called *sharrows*; vehicles and bicycles share the travel lane.

3. Yield Street (Residential Street)

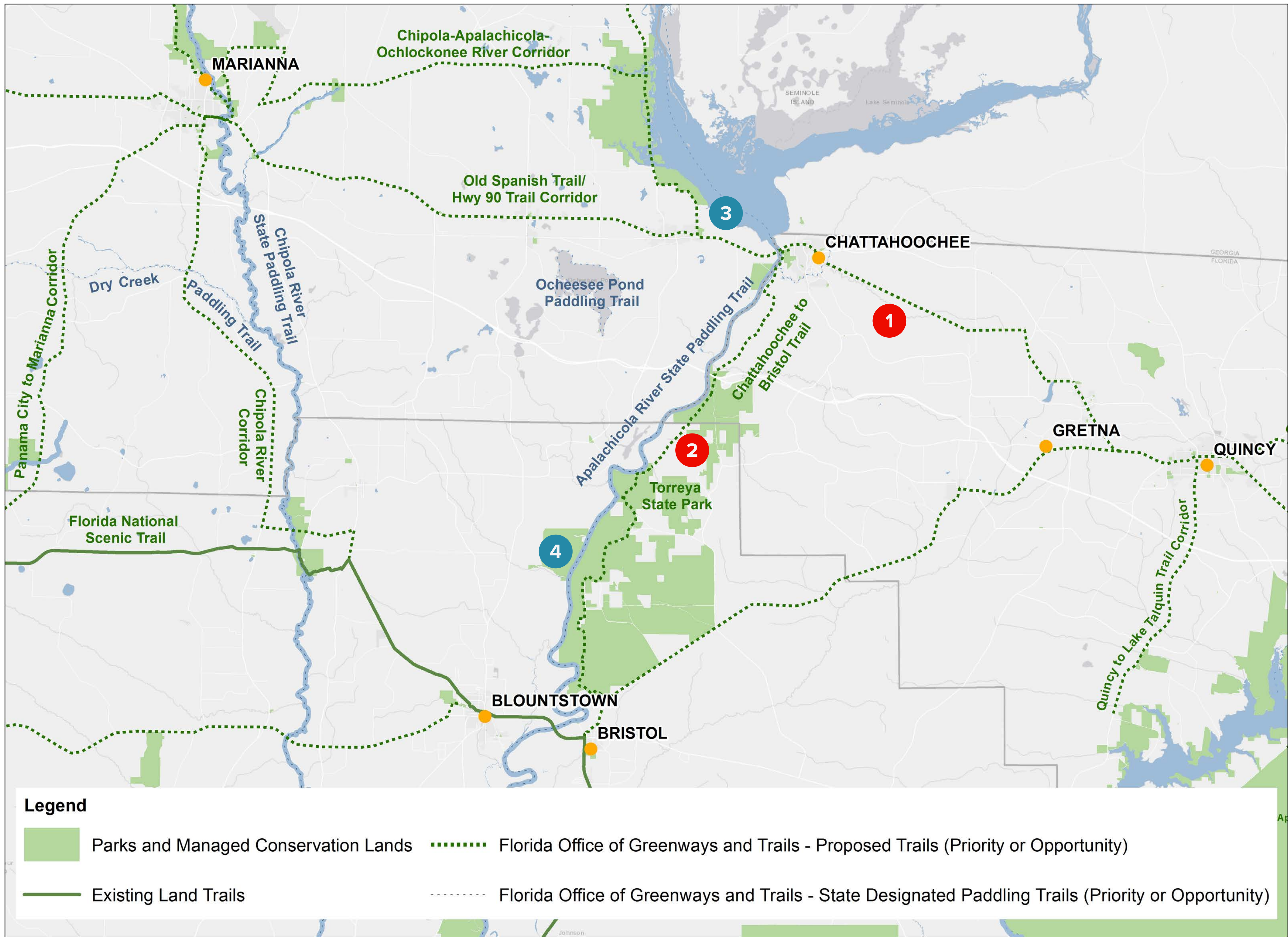
On local residential streets, vehicles, bicyclists and pedestrians share the road. To increase driver awareness, pavement markings and signs may be used as reminders.



Typical conditions for yield street

2 - Regional Connections and Assets

A network of regional trails link Chattahoochee to regional natural and recreational assets.



1 US 90 / Old Spanish Trail Corridor

A planned regional priority trail that upon completion, will trace Highway 90 and connect Marianna, Chattahoochee and Quincy.

The existing highway links the Chipola and Apalachicola while following most of the path taken by the historic Old Spanish Trail.

2 Chattahoochee to Bristol Trail

A proposed opportunity land trail that connects Chattahoochee and Bristol and parallels the Apalachicola River corridor. The corridor is an area recognized by the South Atlantic and Southeast Conservation Blueprint as a high priority for conservation along the Apalachicola River to the Apalachicola National Forest.

As part of the Florida Forever Project, the state of Florida has already acquired several parcels for conservation along the Apalachicola River. However, there are still gaps where essential parcels are still in the acquisition process.

Torrey State Park is located between Chattahoochee and Bristol along the Apalachicola River and hosts a variety of rare and endemic species. It has an established trail system that offers additional opportunities to expand land trails along the Apalachicola River.

3 Chattahoochee River-Lake Seminole Paddling Trail

A proposed paddling trail on Lake Seminole.

4 Apalachicola River Blueway and Paddling Trails System

Paddling trail along the Apalachicola River, which flows from Lake Seminole through Chattahoochee and along Bristol and Blountstown.

